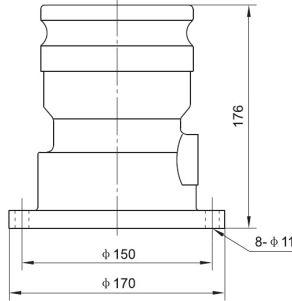




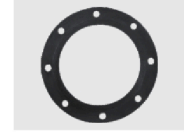
Flowtech

Vapor Adaptor Valve Series

Vapor Adaptor Valve **C803F-100**



Pneumatic Interlock Valve

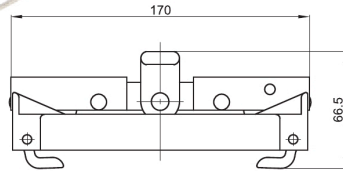


Gasket

Function & Feature

1. Aluminum alloy surface is treated by oxidation
2. Install interlock valve, it can control the vapor recovery system by vapor recovery joint.
3. The main body use aluminum alloy casting, inner shaft parts adopt stainless steel.

Dust cap **C8032**



To prevent the vapor adaptor valve from the dust or surface damage. Easy quick connecting method to make the user's operation more convenient.

Function & Feature

- **Bright Color**
The orange color to be obvious to get the vapor recovery position.
- **Light Weight**
Special Nylon body to ensure the fastness and durability.
- **Easy-operation**
One push and pull to control the open and close
- **Lead sealing hole**
To put the lock or make the lead seal is available.

Technical Data

Nominal Pressure	0.4MPa
Material	Reinforced Nylon
Temperature Range	20~ +50

Vapor Adaptor Valve **Introduction**

Vapor vent valve is designed as quick connecting structure and installed on the downside of the tanker near to unloading position. It is an important part for controlling the vapor input and output of the tanker. The interlock valve in valve body can control the combing vent valve by coupling the valve to touch the interlock.

Technical Data

Nominal diameter	3" / 4"
Nominal Pressure	0.4MPa
Material	Alloy Aluminum
Flow rate	10,000 Lpm
Installation	Flange / Threaded
Temperature Range	20~ +50

Function & Feature

- The main body use Light weight aluminum alloy construction is light and sturdy.
- Aluminum alloy surface is treated by oxidation to improve the anti-corrosion.
- The inner accessories and springs are made of stainless steel.
- Having sight glass, easy to observe the inner working situation
- Pneumatic interlocking valve can be installed to realize interlock control by docking