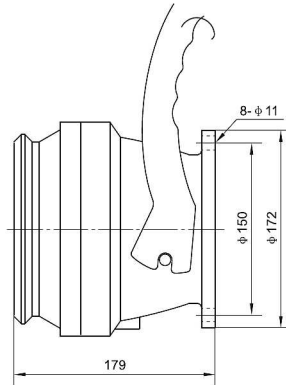


API Adaptor Valve **C806C-100**



Second Gear Open Device



Sight Glass



The position to install interlock valve



Hard Anodes Valve Body

► **Function & Feature**

- 1.Split structure,It can change valve sealing without remove the valve body.
- 2.Valve body is oxidized by hard anodes and is not easy abrasion when connecting with joint.
- 3.The interface dimensions is conform to standard API RP1004,it can connect with standard API joint.
- 4.Pneumatic interlocking valve can be installed to realize interlock control by docking

Gravity Drop Coupler **C8061-65/80/100**



► **Functions and Features**

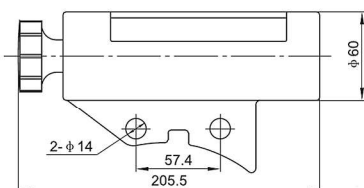
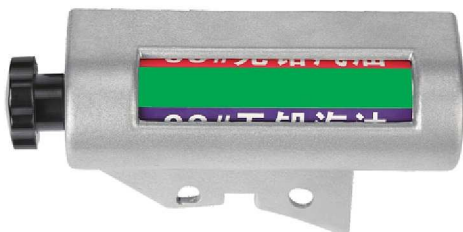
- **Special surface Treatment**
Aluminum alloy surface is treated by oxidation to improve the anti-corrosion.
- **Standardized Dimension**
Interface dimension is designed according to the standard of API RP1004,connecting with the standard API coupling.
- **Reasonable Design**
The bevel angle design is easy for gravity discharging and effective protect the discharging hoses.
- **Light Weight**
Light Weight aluminum alloy construction is light and sturdy

The Gravity Drop Adaptor has been specifically designed for use with API adaptors when discharging product and will couple to any adaptor made in accordance with API Rp1004.

► **Technical Data**

Outlet size	2.5" / 3" / 4"
Working pressure	0.6MPa
Material	Aluminum alloy
Temperature range	20~+50

Fuel Predictor **YOJE**



Sight Glass **SG-40**

