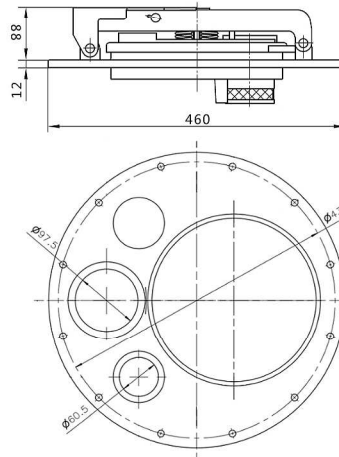


Manhole Cover **C801A-460-A01**



P/V Vent Valve



Key



Secondary Open Device



Emergency Exhausting Device
Rated: Air 7000 m3/h at 35 kPa

Function & Feature

1. Big plate & small plate are casted, oxidation treatment on the surface
2. Can be install double P/V vent valve according to requirements
3. Compact dimensions, relatively low manufacturing cost
4. Big plate have two hole, it can be installed with optic sensor, dip tube or external vacuum valve.

P/V Vent Valve **C8011**



P/V vent is installed on the top of the tanker. When there is pressure difference inside and outside of the tanker, it can adjust pressure difference by p/v vent inlet and outlet air to make the balance.

Function & Feature

- **No leakage when over rolled**
When the tanker over rolled at the certain angle, it will automatically full closed to prevent the inside fuel spills out.
- **Superior Work**
High precision spring makes it work more accurately.
- **Surface treatment**
Valve body casting forming, aluminum alloy surface is passivated

Technical Data

Outlet opening pressure	+8~+10 kPa
Inlet opening pressure	-1~-2 kPa
Flow Rate	out. 200 m ³ /h & in. 96 m ³ /h
Material	aluminium alloy
Installation	Threaded/ Flanged
Temperature Range	20~ 50